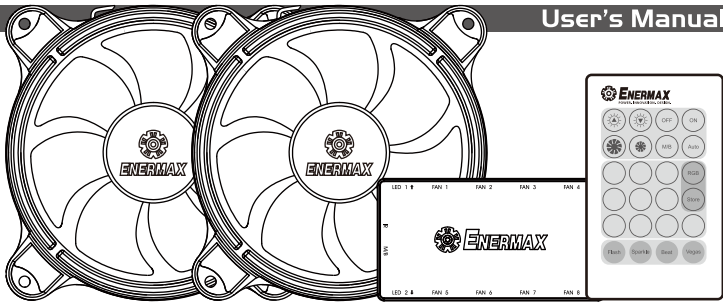


14cm 2 FAN PACK User's Manual



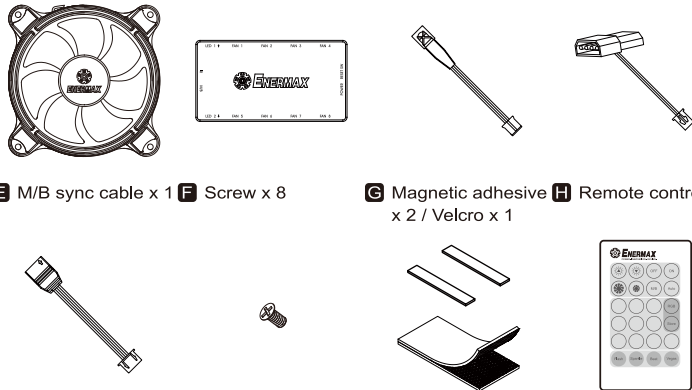
Model Number	UCTBRGB14-BP2
Dimension (mm)	140 (W) x 140 (H) x 25 (D)
Speed (RPM)	1200 (±10%) *500-1200 (±10%) via remote-control
Air Flow (CFM)	56.89 (max)
Air Flow (m ³ /h)	96.65 (max)
Static Pressure (mm-H ₂ O)	1.18 (max)
Maximum Noise (dBA)	21
Rated Current - Fan (A)	0.2
Rated Current - RGB LED (A)	0.35
Rated Voltage (V)	12
MTBF (hours)	≥ 160,000 @ 25°C
Connector	6-PIN
Warranty	1 year
Package contents	T.B.RGB fan x 2 Screw x 8 Control box x 1 Remote control x 1

© 2018 ENERMAX TECHNOLOGY CORPORATION. All right reserved.
Specifications are subject to change without prior notice. Some trademark may be claimed as the property of others.

※ Product specifications are subject to change without prior notice.
※ For detailed information, please visit our website at www.enermax.com.

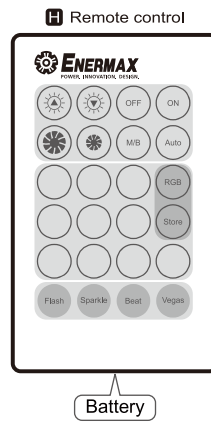
Chapter 2 - Part List

- A** T.B.RGB fan x 2 **B** Control box x 1 **C** Infrared sensor x 1 **D** Power cable x 1



*Notice: Actual specifications / product parts may vary according to different regions or countries.

Chapter 3 - Remote Control Overview



Function	Icon	Description
Brightness / Lighting Speed	☀️	Brightness / Lighting Speed
OFF/ON	⏻ / ⏪	OFF/ON
Fan Speed Fast/Slow	🌀 / 🌀	Fan Speed Fast/Slow
Motherboard Sync switch	MB	Motherboard Sync switch
Preset 10 colors with flash effect	Auto	Preset 10 colors with flash effect
Colors	RGB	RGB colors automatically rotate
	Stop	Fix your preferred color in RGB mode
	LED	LED colors
Light Effects	Flash	Flash
	Sparkle	Sparkle
	Beat	Beat
	Vegas	3 modes repeated

Chapter 4 - Control Box Installation Guide

